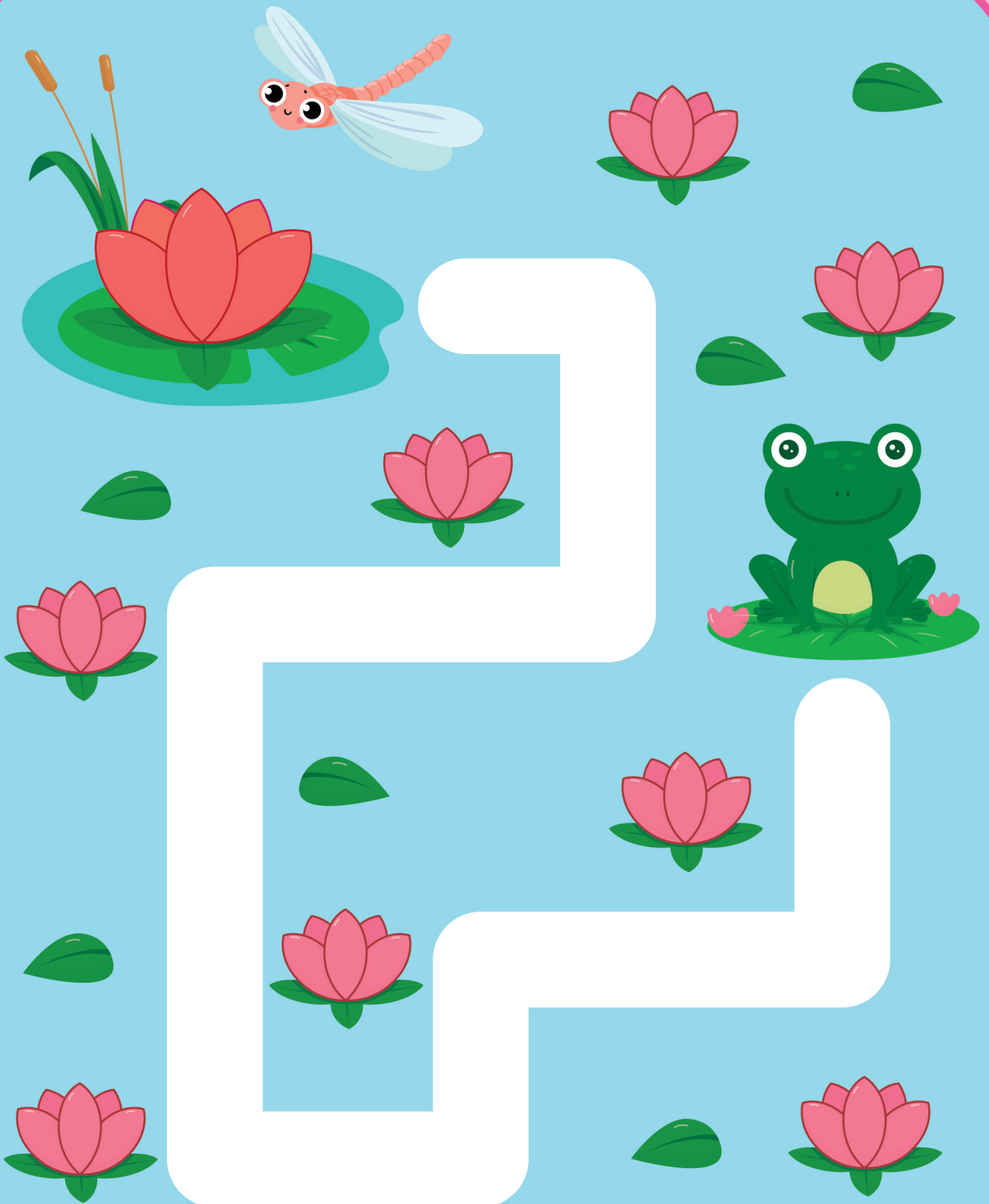


Maze Fun



Instructions: Help the frog to reach the lotus.

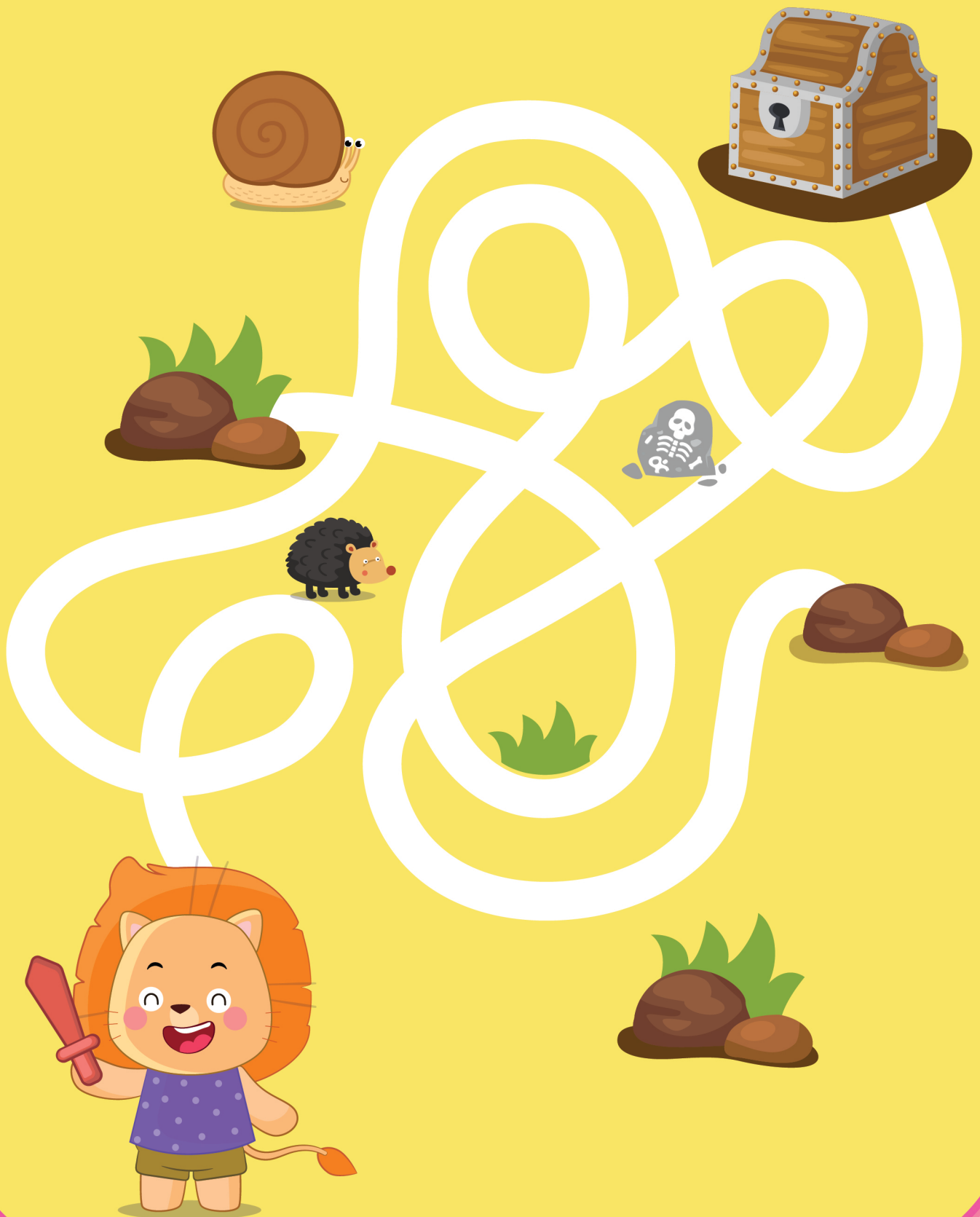
For Ages: 2.5 - 3.5 Years

Maze Fun



Instructions: Help Mimi to reach her foods.
For Ages: 2.5 - 3.5 Years

Maze Fun



Instructions: Help Leo find his treasure box.

For Ages: 2.5 - 3.5 Years

Maze Fun



Instructions: Can Bob find his way back to the tent?

For Ages: 2.5 - 3.5 Years

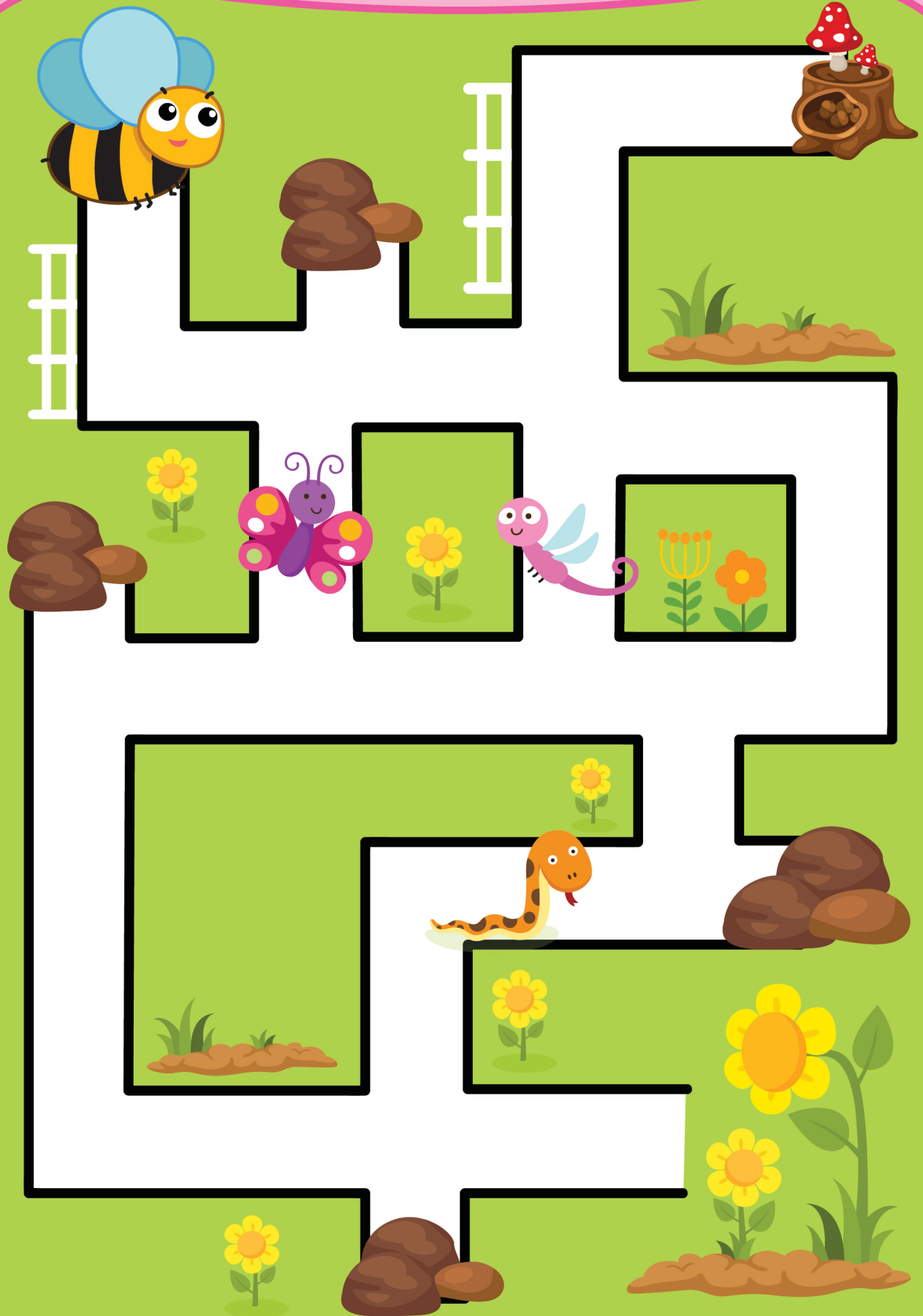
Maze Fun



Instructions: Help detective Bob to find the fossil.

For Ages: 2.5 - 3.5 Years

Maze Fun



Instructions: Help detective Bob to find the fossil.
For Ages: 2.5 - 3.5 Years

Maze Fun



Instructions: Find the ghost its way back to the home.
For Ages: 2.5 - 3.5 Years

Maze Fun



Instructions: Help Mimi to grab his banana.
For Ages: 2.5 - 3.5 Years

Maze Fun



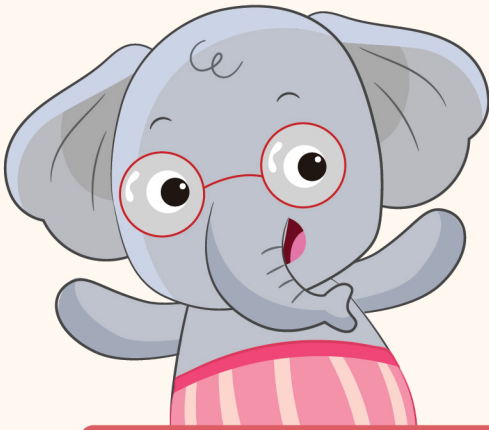
Instructions: Help Binny find his carrot under the hole.
For Ages: 2.5 - 3.5 Years

Maze Fun



Instructions: Can the elephant reach the jungle back?
For Ages: 2.5 - 3.5 Years

Word Puzzle



C

B

M

T

A

P

N

Q

T

Instructions: Find the words from the puzzle.

For Ages: 2.5 - 3.5 Years

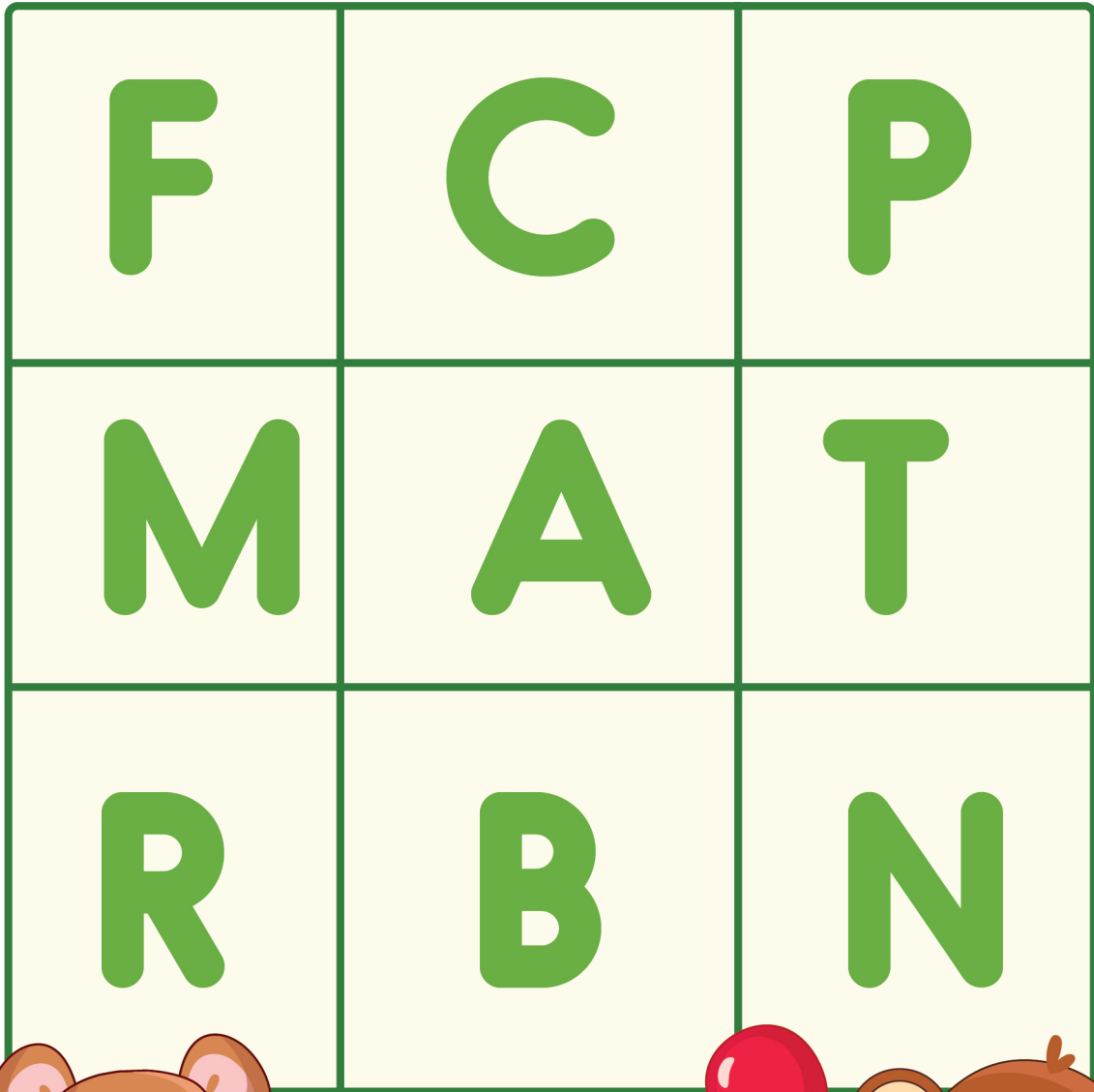
Word Puzzle



Instructions: Find the words from the puzzle.

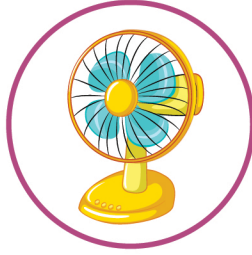
For Ages: 2.5 - 3.5 Years

Word Puzzle



Instructions: Find the words from the puzzle.
For Ages: 2.5 - 3.5 Years

Crossword



F	C	A	P	T	J
A	E	G	Y	Q	U
N	A	P	I	D	G
D	U	J	M	A	P
S	U	N	R	E	T



Instructions: Find names of the pictures from the puzzle.

For Ages: 2.5 - 3.5 Years

Fill in the Puzzle

O

K

G

A		C	
E	F		H
	J		L
M	N		

B

P

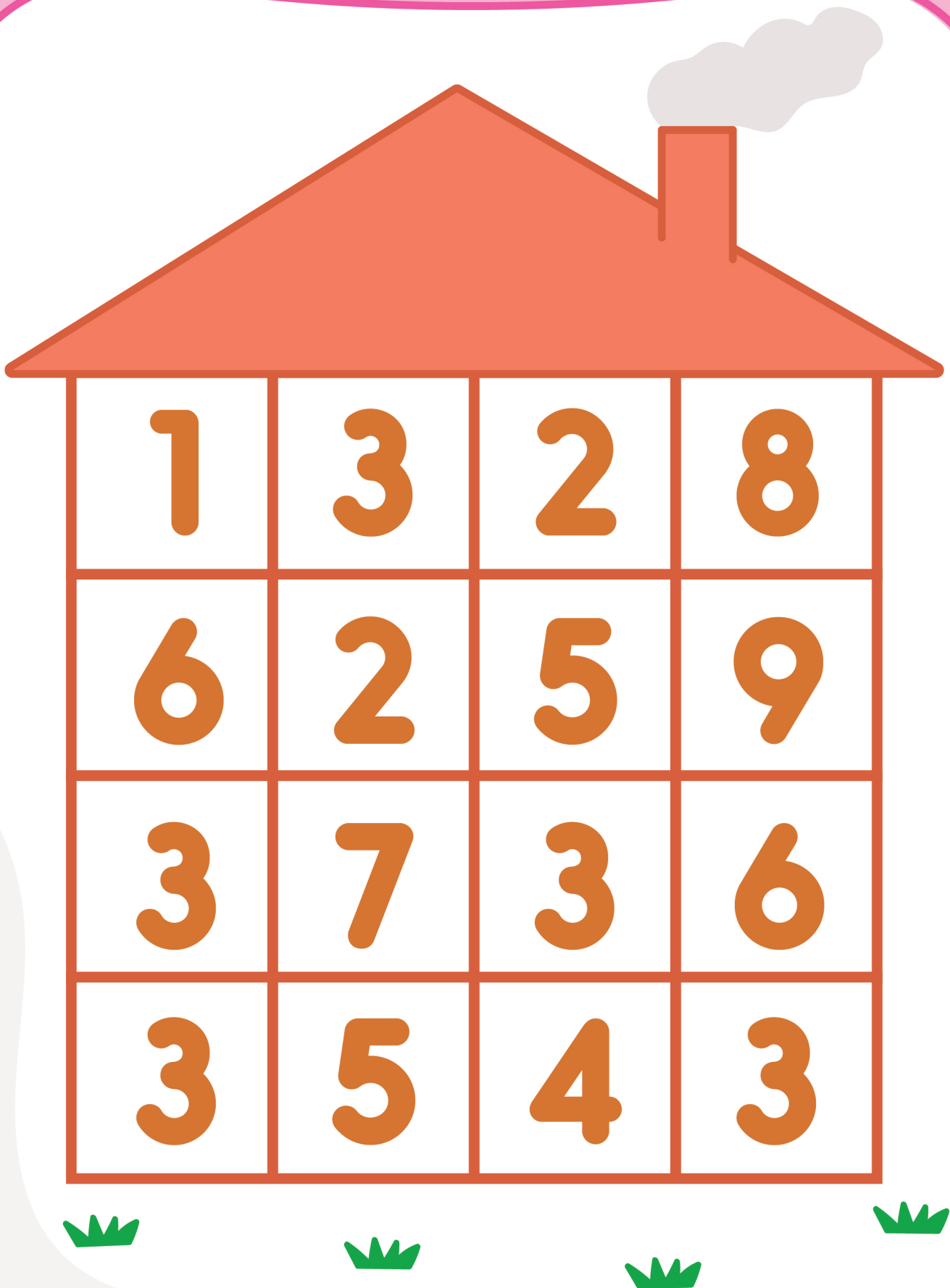
I

D

Instructions: Arrange the letters in the right order.

For Ages: 2.5 - 3.5 Years

Number Puzzle



Instructions: Find and cross number 3.
For Ages: 2.5 - 3.5 Years

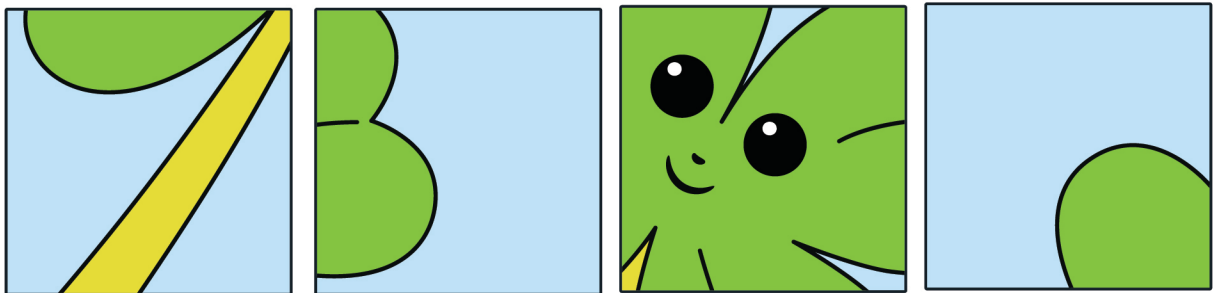
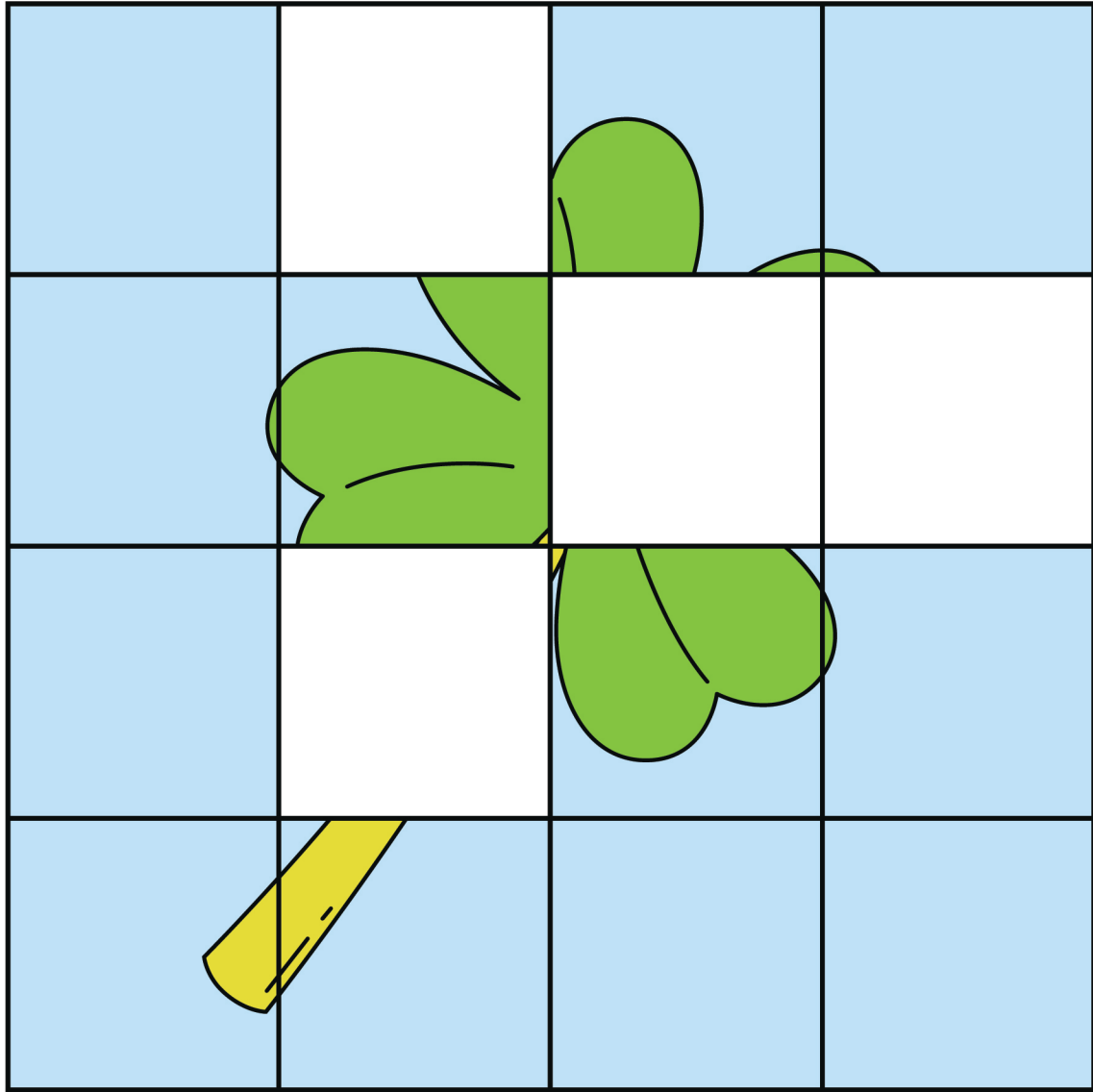
Number Puzzle

0	5	4	3
1	2	6	9
0	8	0	6
7	0	9	0



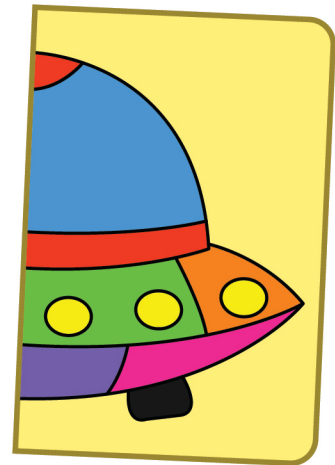
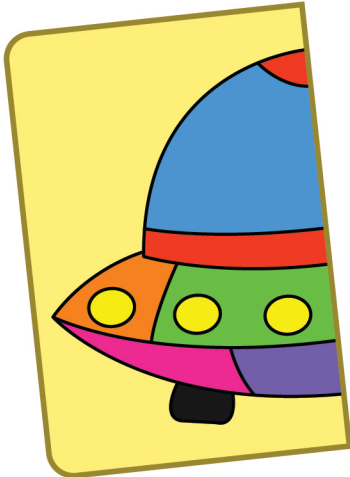
Instructions: Find and cross number 0.
For Ages: 2.5 - 3.5 Years

Picture Puzzle



Instructions: Arrange the missing pieces of the puzzle.
For Ages: 2.5 - 3.5 Years

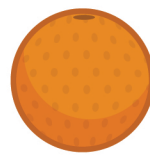
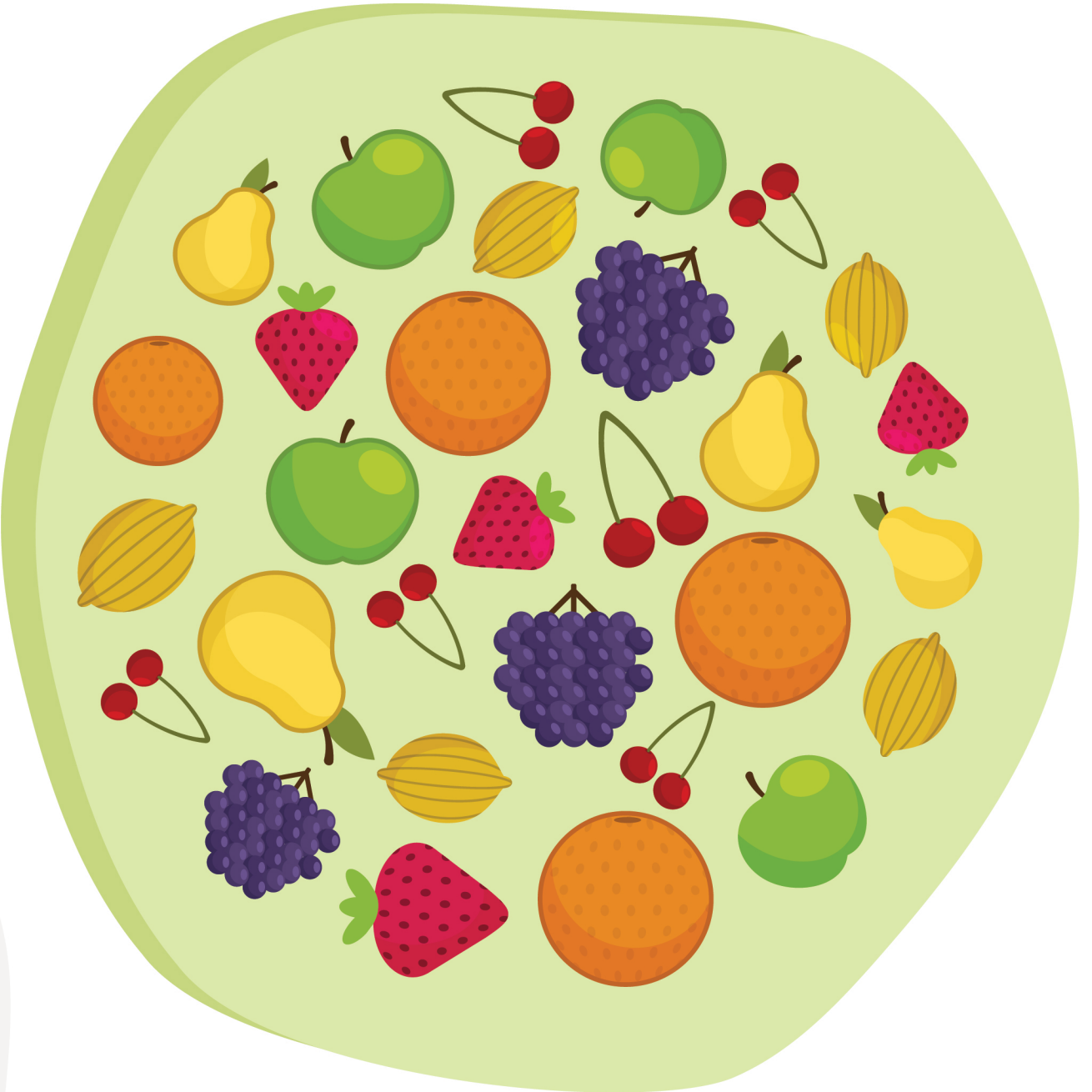
Picture Puzzle



Instructions: Match the other half of the puzzle.

For Ages: 2.5 - 3.5 Years

Picture Puzzle



Instructions: Count and write the number of given fruits.

For Ages: 2.5 - 3.5 Years